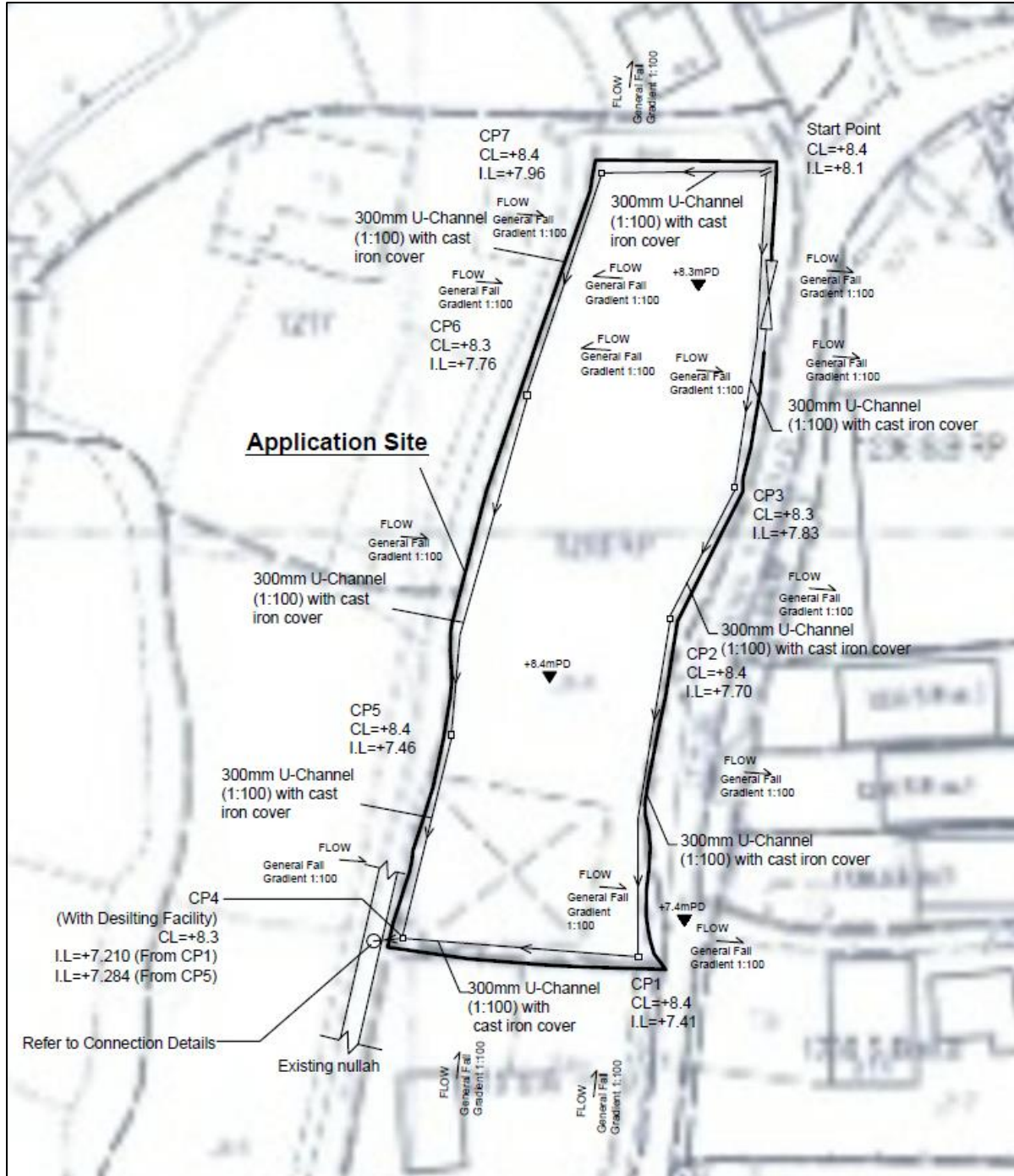
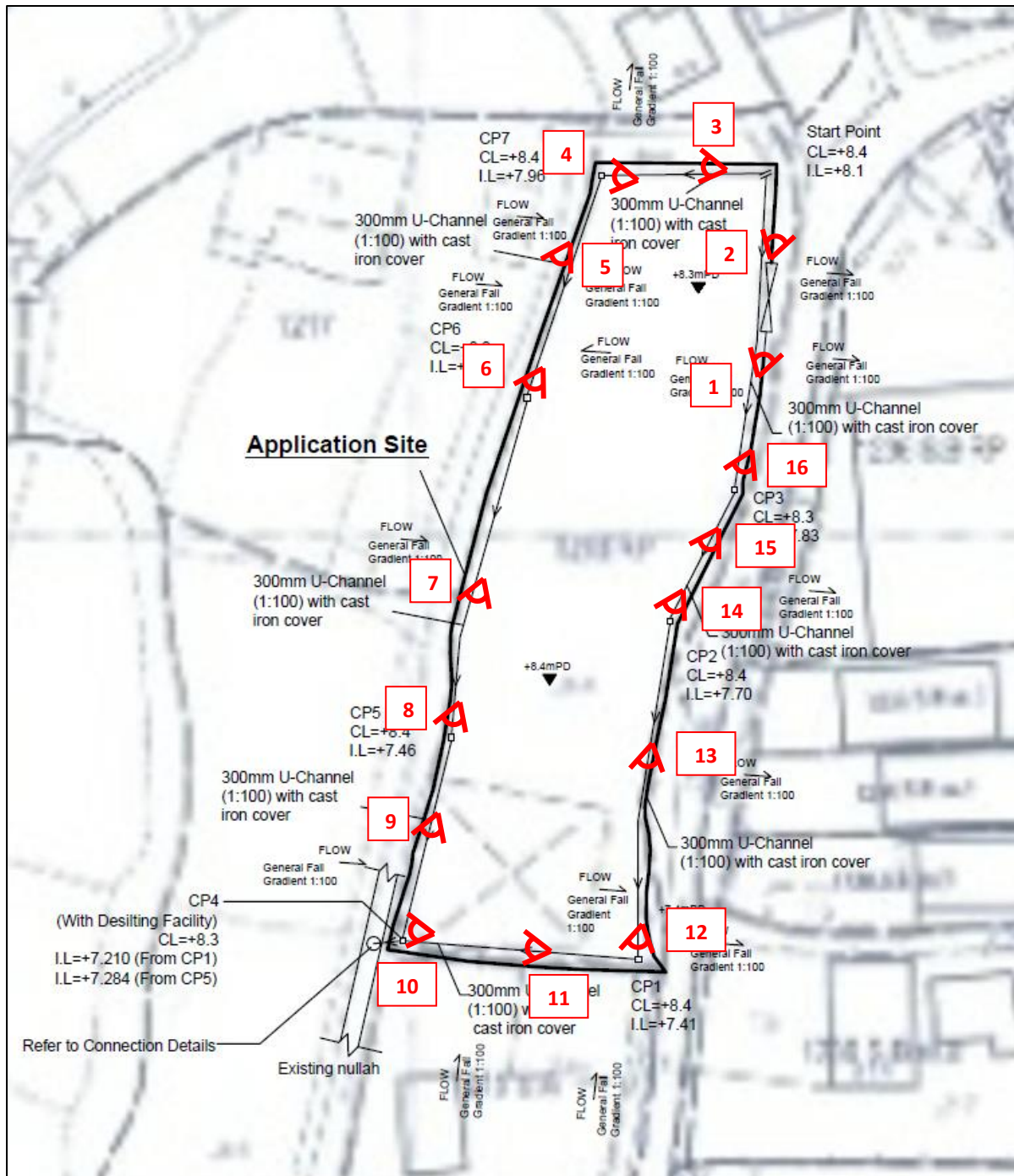


Appendix I – As-Built Drainage Plan and Photographic Records of the Existing Drainage Facilities

(a) The as-built drainage plan (i.e. the accepted drainage proposal of previously approved S.16 planning applications Nos. A/YL-KTN/638 and 881) is as follows:



(b) Photographic records of the existing drainage facilities are as follows:







5



6

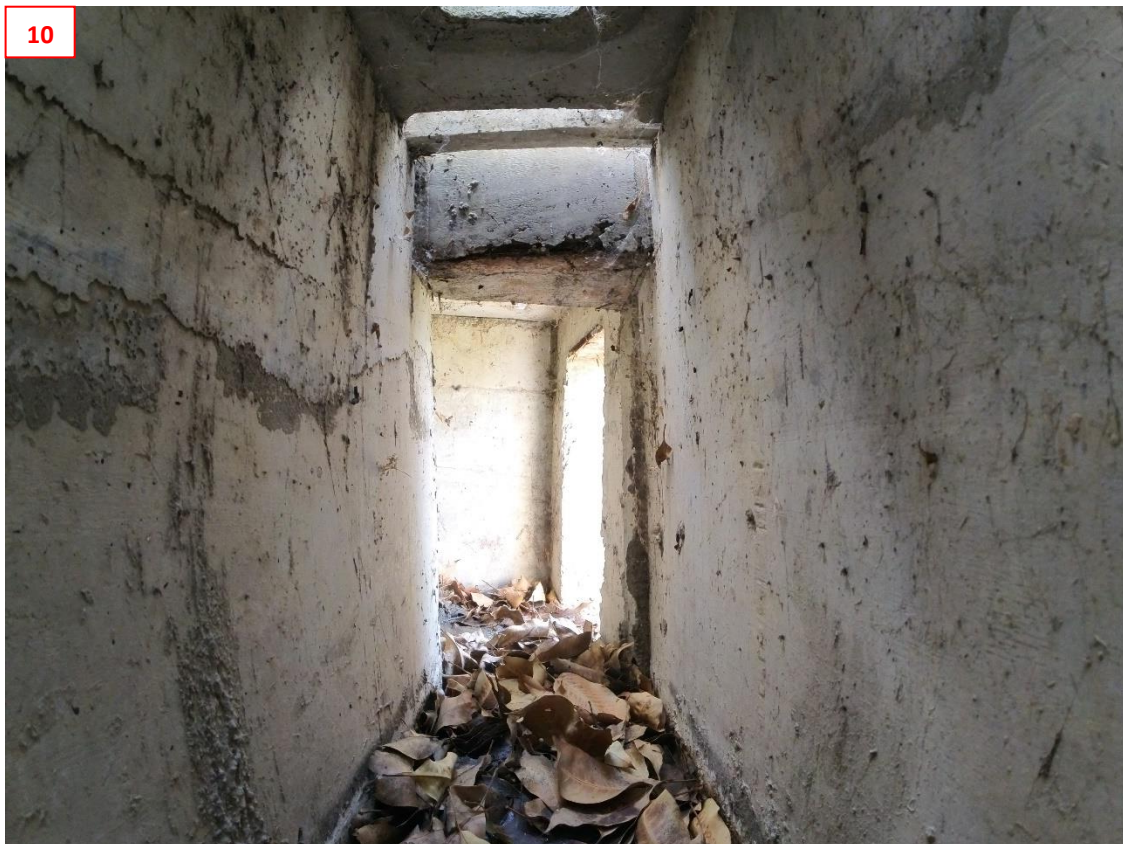


7



8





11



12



13



14



15



16



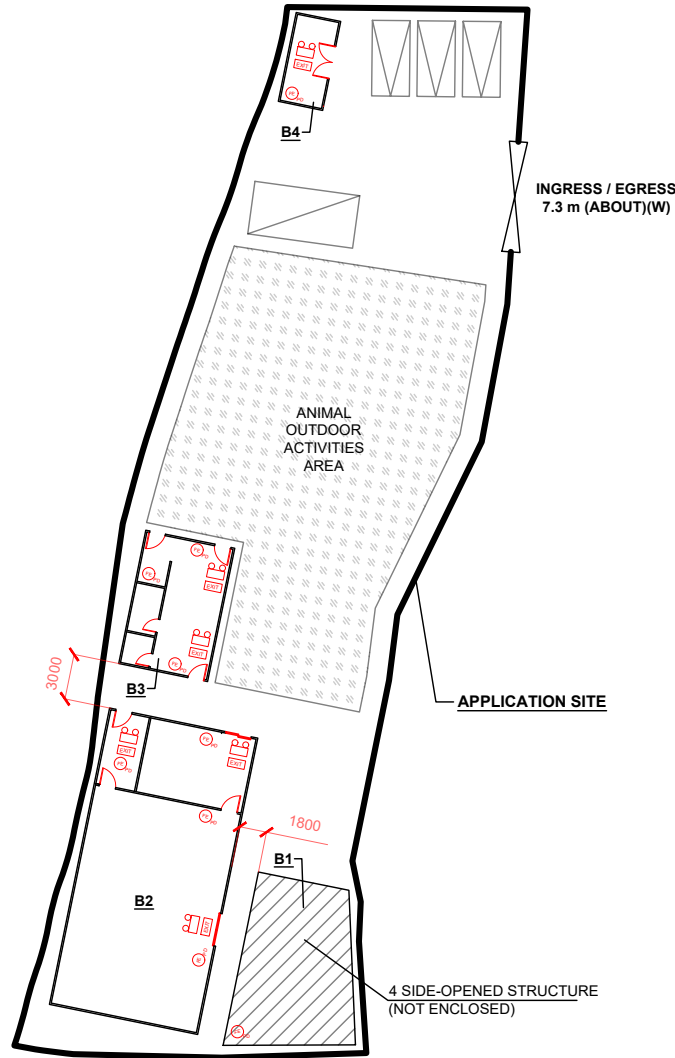
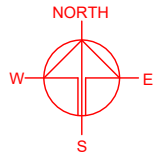
DEVELOPMENT PARAMETERS

APPLICATION SITE AREA	: 1,371 m ²	(ABOUT)
COVERED AREA	: 352 m ²	(ABOUT)
UNCOVERED AREA	: 1,019 m ²	(ABOUT)
PLOT RATIO	: 0.26	(ABOUT)
SITE COVERAGE	: 26 %	(ABOUT)
NO. OF STRUCTURE	: 4	
DOMESTIC GFA	: NOT APPLICABLE	
NON-DOMESTIC GFA	: 352 m ²	(ABOUT)
TOTAL GFA	: 352 m ²	(ABOUT)
BUILDING HEIGHT	: 3 m - 4 m	(ABOUT)
NO. OF STOREY	: 1	

PARKING AND LOADING/UNLOADING PROVISIONS

NO. OF PRIVATE CAR PARKING SPACE	: 3
DIMENSION OF PARKING SPACE	: 5 m (L) X 2.5 m (W)
NO. OF LIGHT GOODS VEHICLE PARKING SPACE	: 1
DIMENSION OF LOADING/UNLOADING SPACE	: 7m (L) X 3.5m (W)

STRUCTURE	USE	COVERED AREA	GFA	BUILDING HEIGHT
B1	RAIN SHELTER FOR ANIMAL ACTIVITIES	80 m ² (ABOUT)	80 m ² (ABOUT)	4 m (ABOUT)(1-STOREY)
B2	ANIMAL BOARDING ESTABLISHMENT	200 m ² (ABOUT)	200 m ² (ABOUT)	4 m (ABOUT)(1-STOREY)
B3	ANIMAL BOARDING ESTABLISHMENT	54 m ² (ABOUT)	54 m ² (ABOUT)	4 m (ABOUT)(1-STOREY)
B4	METER ROOM AND STORE ROOM	18 m ² (ABOUT)	18 m ² (ABOUT)	3 m (ABOUT)(1-STOREY)
TOTAL		352 m² (ABOUT)	352 m² (ABOUT)	



FIRE SERVICE INSTALLATIONS

- EXIT SIGN
- EMERGENCY LIGHT
- 4 KG DRY POWDER FIRE EXTINGUISHER

FS NOTES:

- 1) SUFFICIENT EMERGENCY LIGHTING SHALL BE PROVIDED THROUGHOUT THE ENTIRE BUILDING IN ACCORDANCE WITH BS5266-1:2016, BS EN 1838:2013 AND FSD CIRCULAR LETTER NO. 4/2021.
- 2) SUFFICIENT DIRECTIONAL AND EXIT SIGNS SHALL BE PROVIDED IN ACCORDANCE BS 5266-1:2016 AND FSD CIRCULAR LETTER NO. 5/2008.
- 3) PORTABLE HAND-OPERATED APPROVED APPLIANCE SHALL BE PROVIDED AS REQUIRED BY OCCUPANCY..
- 4) ACCESS IS PROVIDED FOR EMERGENCY VEHICLE TO REACH 30m OF ALL PART OF STRUCTURES.

LEGEND

- APPLICATION SITE
- STRUCTURE (ENCLOSED)
- STRUCTURE (4-SIDE OPENED)
- INGRESS / EGRESS
- PARKING SPACES (PC)
- L/LUL SPACE (LGV)

PLANNING CONSULTANT



PROJECT

TEMPORARY ANIMAL BOARDING ESTABLISHMENT WITH ANCILLARY FACILITIES FOR A PERIOD OF 5 YEARS AND ASSOCIATED FILLING OF LAND

SITE LOCATION

LOT 1218 RP (PART) IN D.D. 109, TAI KONG PO, KAM TIN, YUEN LONG, NEW TERRITORIES

SCALE

1 : 500 @ A4

DRAWN BY	DATE
MN	21.2.2024

REVISED BY	DATE

APPROVED BY	DATE

DWG. TITLE
FSIs PROPOSAL

DWG NO.	VER.
APPENDIX II	001